

SAGE ABRA

SAGE ABRA BENEFITS CONNECT

SIMPLE, FLEXIBLE COMMUNICATION

Automatically reformats the employee enrollment data in your Abra HR system and sends it to benefits carriers on your behalf.

ACCURACY

Eliminates the chance of errors by electronically extracting employee enrollment data from your system.

SUPPORTS VIRTUALLY ALL CARRIERS

Supports all types of benefit carriers, including health, dental, vision, life, 401(k), and disability.

AUTOMATIC SCHEDULING

Automatically transmits the data to your carriers on the schedule determined by each carrier.

EASY-TO-USE TECHNOLOGY

All you need is an Internet connection – No complex technology or IT support is required.

E-MAIL CONFIRMATIONS AND STATUS UPDATES

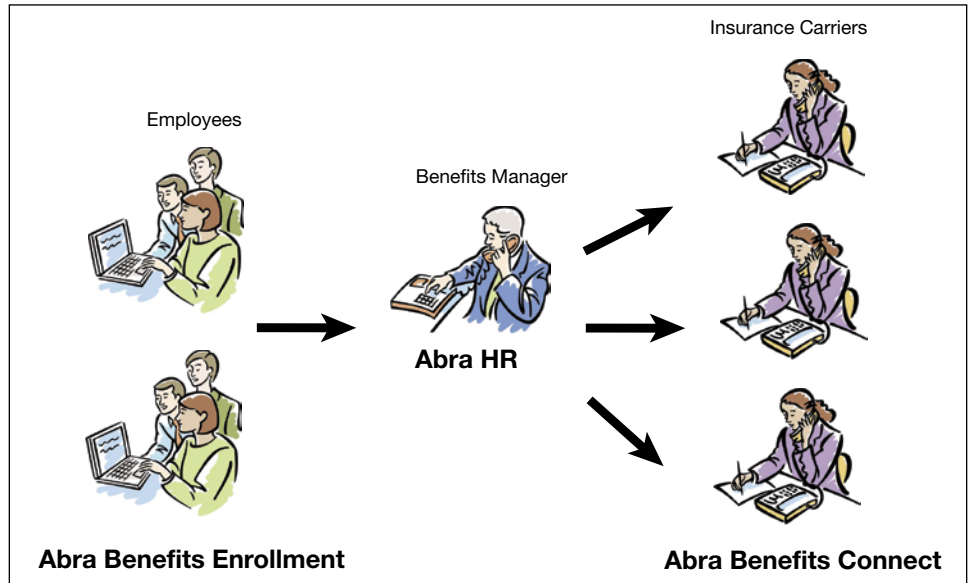
Receive automatic transmission confirmations and e-mail status messages so that you can be assured that your benefits data has been received.

SUPPORTS ALL DATA FORMATS

Supports all data formats required by benefits carriers, including ASCII, XML, HIPAA ANSI X12 834 EDI, and human-readable formats.

SECURITY

Your employee benefits data is secured with SFTP & SSL Internet security protocols, PGP encryption, and authentication certificates.



Sage Abra Benefits Connect eliminates the costly errors associated with duplicate data entry and 'missed enrollments' both during annual open enrollment periods and for employee changes throughout the year.

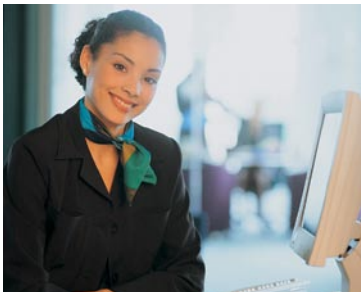
Cut the costs and complexity of benefits administration by securely automating the communication of employee benefits enrollment data to insurance carriers and other benefit providers with Sage Abra Benefits Connect. This powerful solution will eliminate the need to submit paper enrollment forms or create and maintain customized electronic file formats. Abra Benefits Connect also eliminates the costly errors associated with duplicate data entry and 'missed enrollments' both during annual open enrollment periods and for employee changes throughout the year.

Supporting virtually all benefits carriers, Abra Benefits Connect automatically extracts the benefits data from the Abra HR database, re-formats it to meet the specific requirements of each benefit carrier, and then securely transmits it to the carriers over the Internet. Abra Benefits Connect makes it easy to switch carriers when you need to, giving you more flexibility to find the most cost-effective insurance plans for your company.

Affordable and easy-to-use, Abra Benefits Connect helps simplify the back-end of the enrollment process between the employer and the carriers. And, when used in conjunction with Sage Abra's employee enrollment portal, Abra Benefits Enrollment, Abra Benefits Connect virtually eliminates the need for handling paper throughout the entire enrollment process, resulting in even greater labor and paper cost reductions.

From developing innovative products to providing award-winning customer support, Sage Software is dedicated to surpassing your expectations. Our software is supported by a nationwide network of Certified Business Partners who are your resource for implementation, training, service, and support. For more information about Sage Abra Benefits Connect, please contact your local business partner, or call us toll free directly at 800-424-9392. You may also visit our Web site at www.sageabra.com.

Available with:
Sage Abra HRMS v8.2 or higher
Sage Abra Suite – U.S. Edition v7.5 or higher



Sage Abra

Benefits Connect

FEATURES

Simple and Flexible Communication with Carriers

Simplify the process of communicating with benefits carriers by allowing Abra Benefits Connect to manage all of the setup and details for you. It automatically reformats the data already in your Abra HR system and sends it to your carriers on your behalf. Its simple, 5-step setup process makes it easy to add or switch carriers when you need to.

Accuracy

Automatically extract employee enrollment data from the Abra HR database, which eliminates the chance of data entry errors. Abra Benefits Connect saves you money by ensuring that you are not charged for terminated or ineligible employees.

Supports Virtually All Carriers

No matter which benefits providers your company partners with, Abra Benefits Connect can meet your needs. Abra Benefits Connect supports insurance carriers in the U.S. and Canada, including health, dental, vision, life, disability, 401(k) and other types of plan providers. A current list of carriers is available upon request from Sage Software.

Automatic Scheduling

Automatically extract your benefits data and transmit it to your carriers on the schedule determined by each carrier. Now, you don't have to worry about "missed enrollments" where employee benefit changes aren't sent to your insurance providers – scheduled data feeds ensure that all relevant information is consistently communicated to benefits providers.

Easy-to-use Technology

Abra Benefits Connect does not require complex technology or IT support. Sage Software will handle all of the technical requirements of the data transfer to carriers, so you don't have to. Once you install the Abra Benefits Connect data utility provided by Sage Software, all you need is an Internet connection to utilize the service.

E-mail Confirmations and Status Updates

You don't have to worry about whether your carriers received your benefits data. Abra Benefits Connect provides you with transmission confirmations and e-mail status messages so that you can be assured that your benefits data has been received.

Supports All Data Formats

Abra Benefits Connect supports all data formats required by benefits providers and carriers, including: ■ ASCII: fixed, comma delimited, and tab delimited ■ XML: according to various schemas ■ EDI: ANSI X12 834 standard and extended (HIPAA) ■ Human readable reports: paper, fax, PDF, etc.

Security

Abra Benefits Connect is completely secure. Your sensitive employee benefits data is protected with secure FTP (SFTP) and secure socket layer (SSL) Internet security protocols, PGP encryption standards, and authentication certificates.

Requirements

Abra HR v7.5 (or higher) or 8.2 (or higher) is required to use Abra Benefits Connect. An Internet connection is also required. Abra Benefits Enrollment is optional.

Total Benefits Management

When combined with Abra HR and Abra Benefits Enrollment, Abra Benefits Connect offers a complete, end-to-end benefits management solution. ■ Employees can make benefits elections online with Abra Benefits Enrollment, which can then be approved and automatically updated in Abra HR. ■ Abra HR manages all types of benefit plans, define eligibility criteria, and calculate premium and benefits costs for employees and dependents. ■ Abra Benefits Connect closes the loop by electronically submitting annual benefit elections and new employee benefit to your carriers, streamlining the entire benefits management process.